

ANCILLARY EQUIPMENT

ANCILLARIES

EMSTEC provide a range of high quality, high performance, oil suction and discharge hoses, extensively used at offshore moorings throughout the world. The EMSTEC **Single Carcass** and **Double Carcass** hose range is complemented by a range of Ancillary Equipment in addition to equipment to aid Transportation, Handling and Testing.

For performance characteristics and specification, please refer to EMSTEC equipment data sheets.

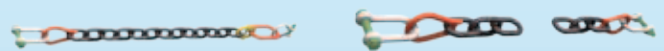
28510 - Flange Jointing

- 28511 - Studs and Nuts
- 28512 - Gaskets
- 28513 - Anodes
- 28514 - Flange Insulation Kits



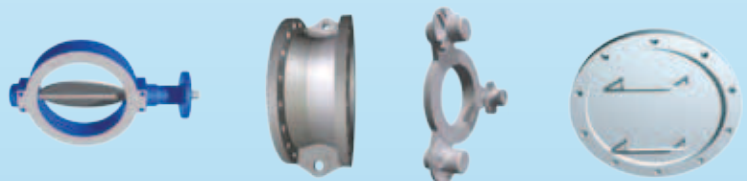
28520 - Chain Assemblies

- 28521 - Pick-up Chain
- 28522 - Snubbing Chain



28530 - Hose End Fittings

- 28531 - Butterfly Valve
- 28532 - Lifting Spool Piece
- 28533 - Camlock Coupling
- 28534 - Lightweight Blind Flange



28540 - Buoyancy Equipment

- 28541 - Pick-up Buoy
- 28542 - Floating Concentric Reducer
- 28543 - Floating 'Y' Piece
- 28544 - Hose Floats



28550 - Hose Marker Lights

- 28551 - Winker Light

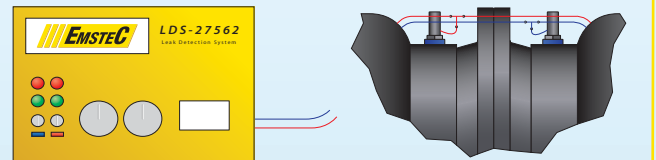


ANCILLARY EQUIPMENT (continuation)

ANCILLARIES

28560 - Continuous Leak Detection System

- 28561 - Single Line Leak Detection
- 28562 - Closed Circuit Leak Detection
- 28563 - Visual Indicator



28570 - Special Hose Connector / Couplings

- 28571 - Hose End Valve (i.e. Hose connection to BLS)
- 28572 - Emergency Release Coupling (ERC)
- 28573 - Marine Breakaway Coupling (MBC)

