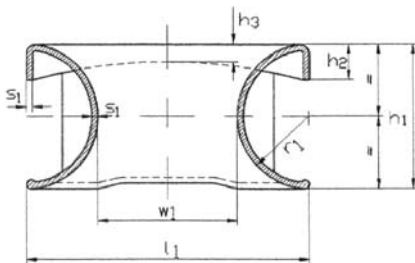
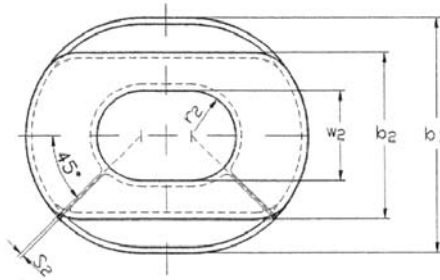


Marine Equipment

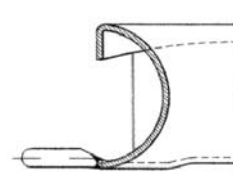
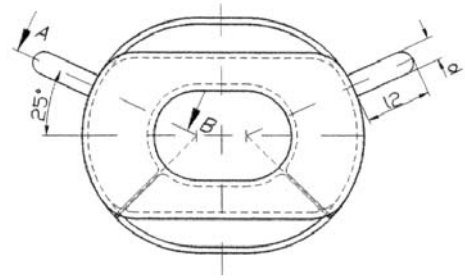
D 1-1

Multi-Purpose-Chocks

DIN 81915, Type A



DIN 81915, Type B



CODE	TYPE	WIRE W.L. (kN)	b ₁	b ₂	h ₁	h ₂	h ₃	l ₁	r ₁	r ₂	s ₁	s ₂	w ₁	w ₂	WEIGHT (kg) GS
04009	A 2	2	315	225	200	70	25	360	100	57,5	12	6	160	115	26
04010	A 3	30	390	275	250	75	32	450	125	70	14	7	200	140	42
04011	A 5	50	480	340	300	80	38	550	150	90	16	8	250	180	74
04012	A 8	80	585	415	360	90	45	680	180	112,5	18	9	320	225	120
04013	A 12	125	710	500	440	110	55	840	220	135	20	10	400	270	185
04014	A 20	200	840	595	520	130	65	1020	260	160	22	11	500	320	285
04015	A 32	320	1100	800	700	150	80	1300	350	200	35	20	600	400	795

CODE	TYPE	d	l ₂
04026	B 3	40	140
04027	B 5	45	160
04028	B 8	50	180

Specification:

Finish: Shopprimer

Material: GS-38.3 DIN 1681

Type C 8: Single Chock Acc. To Panama Rules

Type C 12: Double Chock Acc. To Panama Rules

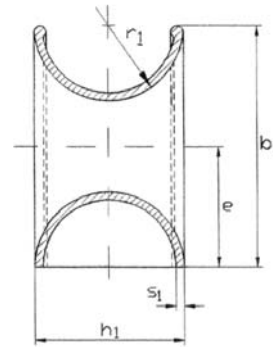
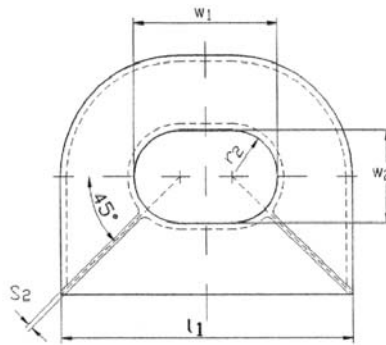
Special applications are available on request ▼

Marine Equipment

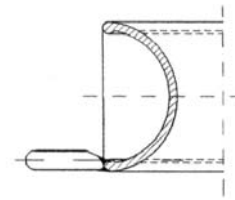
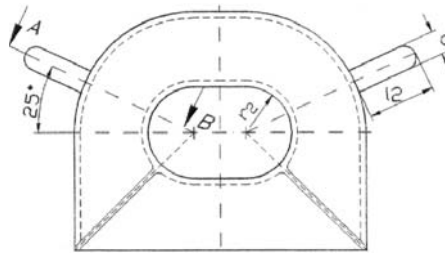
D 1-2

► Multi-Purpose-Chocks

► DIN 81915, Type C



► DIN 81915, Type D



CODE	TYPE	WIRE W.L. (kN)	e	b ₁	h ₁	l ₁	r ₁	r ₂	s ₁	s ₂	w ₁	w ₂	WEIGHT (kg) GS
04017	C 2	20	157,5	315	200	360	100	57,5	12	6	160	115	29
04018	C 3	30	195	390	250	450	125	70	14	7	200	140	48
04019	C 5	50	240	480	300	550	150	90	16	8	250	180	84,5
04020	C 8	80	292,5	585	360	680	180	112,5	18	9	320	225	135,8
04021	C 12	125	355	710	440	840	220	135	20	10	400	270	211,1
04022	C 20	200	420	840	520	1020	260	160	22	11	500	320	325,2
04023	C 32	320	550	1100	700	1300	350	200	35	20	600	400	840

CODE	TYPE	d	l ₂
04034	D 3	40	140
04035	D 5	45	160
04036	D 8	50	180

Specification:

Finish: Shopprimer

Material: GS-38.3 DIN 1681

Type C 8: Single Chock Acc. To Panama Rules

Type C 12: Double Chock Acc. To Panama Rules

Special applications are available on request ▼