

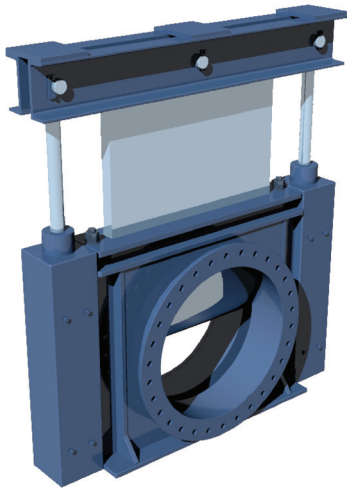
Piping

C

6

▸ Shore Valves

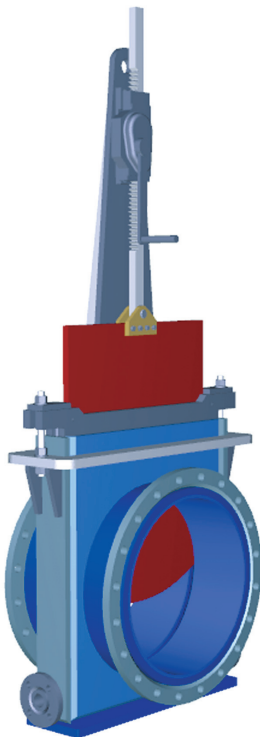
▸ Shore Valves



EMSTEC Shore valves are linear motion valves in which a flat closure element slides into the flow stream to provide shut-off. Shore valves are designed to minimize pressure drop across the valve in the fully opened position and stop the flow of fluid completely. The direction of fluid flow does not change, and the diameter through which the process fluid passes is essentially equal to that of the pipe. Hence, they have minimal pressure drop when opened fully.

EMSTEC Shore valves are generally equipped with Stainless Steel gate plates and exchangeable wear resistant lining.

- Sizes range from DN 400 mm to DN 1200 mm.
- Pressure rating up to 25 bar.



i Special application on request ▼